



By Appointment to
Her Majesty the Queen
Glass Restorers
Wilkinson PLC
Sittingbourne

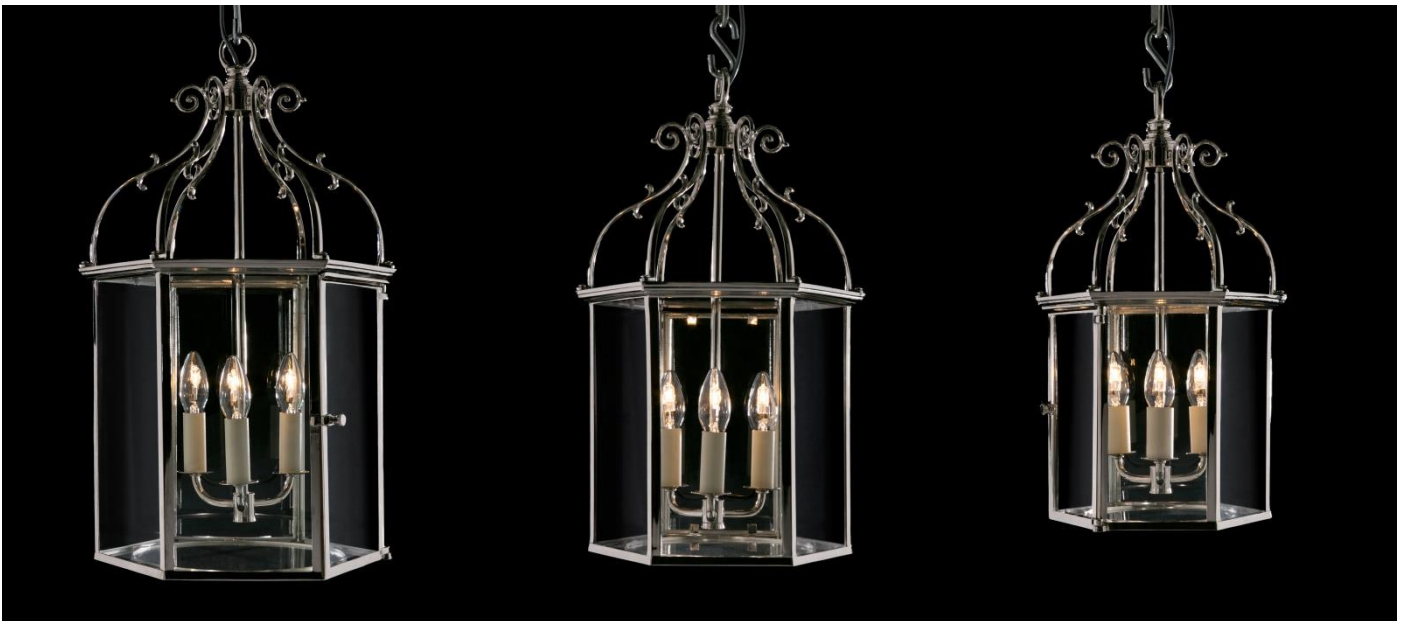
WILKINSON Plc

Newsletter – August 2015

Contemporary Lanterns

Our 3 sizes of hexagonal lanterns have always been popular, so we decided to have a set nickled to appeal to our clients who require a colour that could be considered a little more contemporary in comparison to the traditional brass.

On the second page you will see a variety of items from our lighting stock that may also interest you, finished in nickel, chrome or silver. Additional items can be seen on our website: wilkinson-plc.com/art-deco-modern



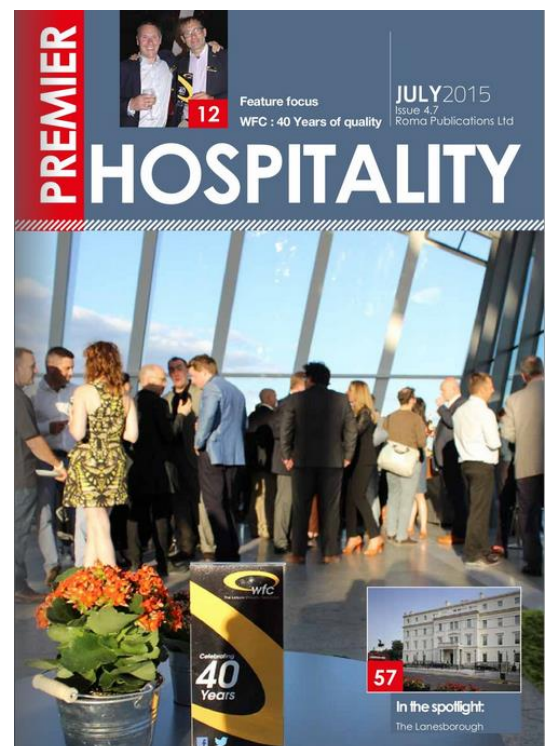
The Lanesborough

There is a wonderful feature in this month's Premier Hospitality magazine on the opening of The Lanesborough. You can view the online version here: romapublications.co.uk/currentedition

From page 57 you can read about the restoration of the landmark hotel and the elite suppliers who were selected to dress the rooms. You will find our contribution on page 62 - 63. On pages 70 – 71 you will see a fantastic image of our bespoke chandeliers hanging in the newly named Celeste restaurant. Our chandeliers can also be seen hanging in situ on pages 76 and 80 and in a wonderful compliment on page 60 in the advert for interior fit out specialists Beck.

Did you know...

...that we have entered this year's Swale Business awards. The awards celebrate and recognise local businesses and their achievements. Awards ceremony in October, so we will keep you updated

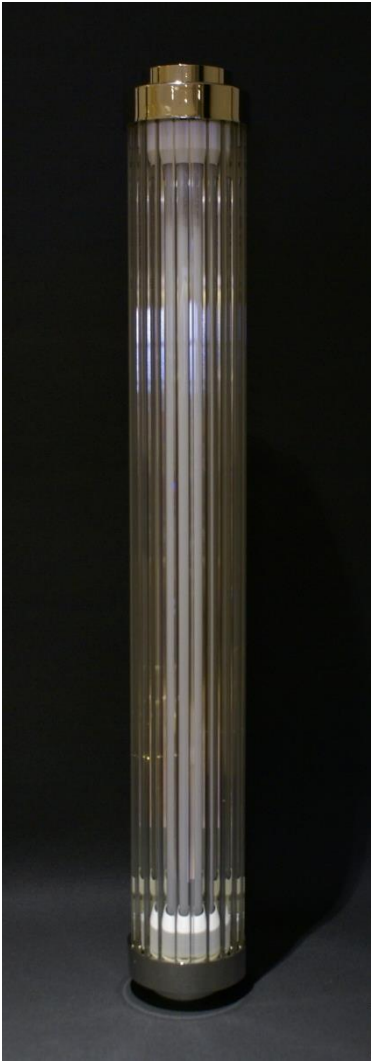


Bexon Court Barn, Hawks Hill Lane, Bredgar, Sittingbourne, Kent, ME9 8HE

Telephone: 01795 830000 Fax: 01795 830543
www.wilkinson-plc.com



Contemporary Products



Tent and bag chandelier with octagonal buttons and icicles. Top leaf corona and decorative central banding. Polished nickel.
H 125cm W 57cm

Art Deco Pillar lights in polished nickel.
H 63cm W 8cm Projection 7cm.
(Also available in chrome and 37cm or 93cm).



Restored "Holophane" glass pendant light with original stamped glass (Number 6635). Metalwork finished in chrome.
H 38cm W 41cm
Height given is to top of eye shackle, chain can be supplied in required length.



Hand blown pumpkin globe lantern with ribbed detail and small clear dots. With matching ribbed smoke dish and internal 3 way pendant.
H 45cm W 35cm



A frosted small bowl light with tri form hanging frame. Designed for single pendant. Metal work in a silver plated finish.
H 28cm W 14cm



Reproduction Art Deco wall lights as manufactured for Claridge's Hotel, with frosted glass panes. Polished nickel metal work
H 34cm W 23cm