



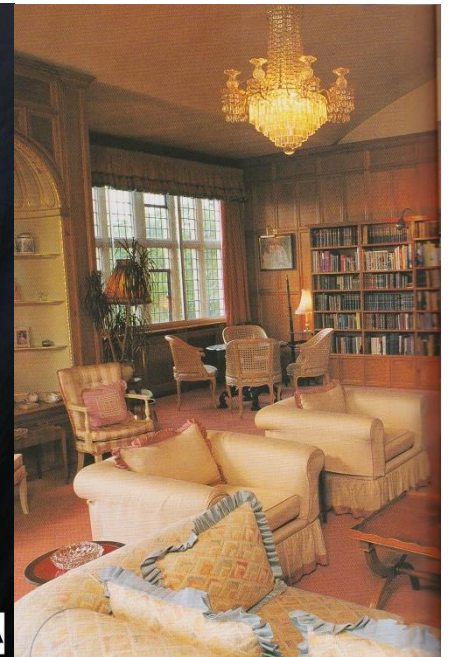
By Appointment to
Her Majesty the Queen
Glass Restorers
Wilkinson PLC
Sittingbourne

WILKINSON Plc

Newsletter – June 2017

Available to purchase

An 8 light regency tent and waterfall chandelier circa 1820-30. 8 metal arms with cut glass drip pans and tall French candles. 8 internal lamps. A cut glass vase and dish support a row of rule drops and a tent of graduated round double point buttons, and below it, a five tier waterfall. Formerly is residence at Bilbrough Manor with connections to Kensington Palace. Height 105cm
Width 81cm
Reference - CS1678



The Lanesborough

The 1st July will mark 2 years since the grand re-opening of London's Hyde Park Corner exclusive hotel, The Lanesborough following an extensive 18 month restoration. We were stunned to be asked by designers Alberto Pinto to produce 78 pieces of lighting for the property, of which 51 were crystal chandeliers. To date it is still the largest single order for chandeliers that Wilkinson Plc has ever received. Here are some interesting facts about the chandeliers and light fittings:

- Total of over 3 tons of chandeliers and wall lights produced
- Over 200 arms and 1,200 crystal parts all hand blown in England, cut and polished in Kent
- Nearly £90,000 worth of gilding and silver plating
- Over 740 LED lamps used saving over 20kw of energy per hour compared to using tungsten lamps.
- 65,000 crystal drops and buttons cut and polished in Austria, Germany, Turkey and Egypt



Bexon Court Barn, Hawks Hill Lane, Bredgar, Sittingbourne, Kent, ME9 8HE

Telephone: 01795 830000 Fax: 01795 830543

www.wilkinson-plc.com

